

MOEBIUS SOFTWARE

Transforming Compliance and RegTech

moebius

CONTACT INFORMATION

Address: 11, Limassol Avenue,
Galatariotis Building, 3rd Floor, 2112
Nicosia, Cyprus
Tel: (+357) 22275190
e-mail:
hpetrou@moebiussoftware.com
Website:
www.moebiussoftware.com

In today's rapidly evolving regulatory landscape, compliance officers and businesses face an increasing array of challenges. From navigating complex legal requirements to managing customer onboarding and document verification, the demand for streamlined and efficient solutions is greater than ever. Moebius Software, a pioneer in the RegTech space, offers a suite of integrated tools designed to address these challenges head-on, empowering organizations to achieve regulatory compliance with confidence and efficiency.

Who is Moebius?

Moebius Limited is a software development and information technology consulting company established in 2014 and based in Nicosia, Cyprus. Moebius is dedicated to providing software solutions that help enterprises of all sizes automate and streamline their business processes, leading to increased efficiency and productivity. In addition, Moebius undertakes bespoke technical and business consulting projects. Our clientele includes market leading corporations in various sectors covering, Legal, Accounting, Audit/Tax, Corporate Management, Administration Service Providers (ASP) and Shipping. Moebius Software is fully compliant with the requirements of ICPAC, CySEC, and the Cyprus Bar Association, allowing for further configuration to match the specific requirements of each regulated entity using the platform. Moebius operates under

a quality management system according to ISO 9001 (1710CY23Q) and ISO 27001 (1710CY23IS) standards and is certified by RIGCERT.

A Unified Approach to Compliance

Moebius Compliance module offers robust KYC functionality, which also allows for entity continuous monitoring and a configurable risk-scoring mechanism. This ensures that businesses can proactively manage compliance risks while meeting regulatory requirements. Moebius is fully integrated with service providers and databases such as LexisNexis, Membercheck and Namescan, giving the access to all information through with a single login. The platform's KYC tools automate client due diligence, verifying identities and assessing risks in real-time. The adjustable risk-scoring system allows organizations to tailor their risk assessments based on specific criteria, enhancing adaptability and control in an ever-changing compliance landscape. Moebius dashboards provide real-time insights into key performance indicators (KPIs), offering visibility into the status of documents, such as expired or soon-to-expire items i.e. IDs, documents awaiting signatures, risk assessments requiring further processing, and much more. In addition, Moebius offers standardized and customizable regulatory Reporting, including Economic Profile, Corporate Register, Beneficial Owner registers, enabling swift responses to regulatory audits and demands.

What really sets Moebius Software apart is its comprehensive, integrated platform that seamlessly connects with other key

business functions relevant with Compliance. With modules dedicated to corporate management, legal case management and customer onboarding/lifecycle procedures with a centralised document management, Moebius eliminates the need for disparate systems. This holistic approach not only simplifies workflows but also enhances data accuracy, minimizes redundancies, and ensures seamless communication across departments.

Corporate Management

Moebius enables organizations to manage their corporate entities with unparalleled efficiency. From managing company capital, tracking board resolutions to managing entity structures and compliance deadlines, the platform provides a centralized repository for all critical data. This ensures that stakeholders have real-time access to accurate information, enabling informed decision-making.

Legal Case Management

Navigating legal complexities is a core concern for many businesses. Moebius' legal case management module streamlines the handling of legal matters, from case initiation to resolution. By centralizing case data and automating routine tasks, the platform reduces administrative overhead and helps legal teams focus on strategic priorities.

Customer Lifecycle Procedures

Customer onboarding is a critical touchpoint for compliance, particularly in industries like finance and regulated service providers. Moebius simplifies this process

MOEBIUS SOFTWARE IS MORE THAN JUST A REGTECH SOLUTION; IT'S A PARTNER IN NAVIGATING THE COMPLEXITIES OF MODERN COMPLIANCE

with tools that automate KYC (Know Your Customer) procedures, ensuring that new clients are onboarded quickly and in compliance with regulatory standards.

Document Management

In the digital age, effective document management is essential. Moebius' document management system ensures secure storage, easy retrieval, and version control of critical documents. Advanced search capabilities and robust security features make it easier for organizations to meet compliance requirements while maintaining operational efficiency.

Exciting New Innovations

Moebius Software continues to lead the way in RegTech with the introduction of two new products: online ID and document verification and integration with JCC eSignatures.

Online ID and Document Verification

The new online ID and document veri-

fication tool is designed to streamline identity validation processes, reducing the risk of fraud and ensuring compliance with stringent regulatory requirements. By leveraging advanced AI and machine learning technologies, this tool enables businesses to verify IDs and documents in real-time, providing a seamless and secure user experience.

Integration with JCC eSignatures

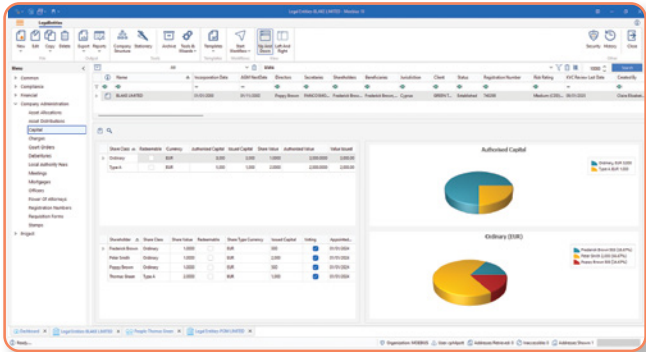
No need to print and scan and then scan again when more signatures are needed. In partnership with JCC, Moebius now offers seamless integration with JCC's eSignature solutions. This feature enhances the document signing process, ensuring that legally binding agreements can be executed quickly and securely. The integration supports compliance by maintaining a

clear audit trail and adhering to electronic signature regulations.

Empowering Organizations for the Future

Moebius Software is more than just a RegTech solution; it's a partner in navigating the complexities of modern compliance. By offering a unified platform with cutting-edge features, Moebius empowers organizations to stay ahead of regulatory requirements while optimizing their operations. With its latest innovations in ID verification and eSignatures, Moebius continues to set new standards in compliance technology. As the regulatory environment grows increasingly complex, businesses

need solutions that are not only robust but also adaptable. Moebius Software is proud to be at the forefront of this transformation, delivering tools that simplify compliance and drive success in the digital age.



Harris Petrou
Business Development Executive, Moebius